

SCHOOL MATTERS

PORT ANGELES SCHOOL DISTRICT SCHOOL NEWS & EVENTS

SUMMER 2008

DISTRICT UPDATES

Thank You for Your Support!

What an amazing year it has been! We appreciate your support of our schools, staff, teachers and students as we complete the 2007-08 school year! It's hard to believe that this time last year we were planning for school and bridge closures, transitioning students and staff to new schools, preparing buildings for a September opening and school boundary adjustments. Staff and families have taken these challenges on with grace and amazing endurance as we weather changes in our community and schools. Thank you for your continued support as we face new challenges in the years ahead!

Technology Levy Does Not Pass

Clallam County Auditor Patty Rosand reported on May 23 that the May 20, 2008 Technology Levy was not passing by a margin of nearly 10%. With 8,311 votes cast, the "Yes" percentage equaled 45.73%, and the "No" percentage, 54.27%. The counts were 3,801 voting "Yes" and 4,510 voting "No," a difference of 709.

"Many people worked very hard on this election," Superintendent of Port Angeles Schools Gary Cohn said. "Co-chairs Theresa Rauch and Norm Schaaf, school staff, parents, students and many community members deserve our heartfelt thanks for their investments of time, energy, and money in this election. We have a very supportive community enduring difficult economic times. I'm very thankful for what we have, and will continue to work toward a better future for our students and our schools. Thank you to our community for its continued support!"

Board Acts on District Fiscal Committee Proposed Cuts to 2008-09 Budget

The Port Angeles School District's Fiscal Advisory Committee made its recommendations for 2008-09 budget cuts to the board of directors at the May 6 school board meeting. The board had previously announced possible cuts for the 2008-09 school year.

"The district is projecting about a half a million dollars will need to be cut from the 2008-09 budget even after our enrollment formula-based reductions," Superintendent of Port Angeles Schools Gary Cohn said. "We're estimating another drop in student enrollment by approximately 100 students next year, followed by an additional 120 students in 2009-2010. Student enrollment decline, the reduction of the levy equalization funds from the state, increased transportation costs, and staff cost of living adjustments partially unfunded



PAHS students Holly Earl, Riley Lee Card, Nathan Dawley, Jesse Winters and Noah James on KONP's Todd Ortloff Show. Visit www.konp.com/podcasts/ to listen to the interview podcast.

by the state all add up together to cause the budget situation."

Visit PARENTS & COMMUNITY/COMMITTEES & TASK FORCES/FISCAL ADVISORY COMMITTEE on the district's website, www.portangelesschools.org, to view the committee's full report.

Graduating Seniors Receive Over \$1.2 Million in Scholarships

Port Angeles High School staff recognized 130 graduating high school seniors at Scholarship Recognition Night on May 22 in the high school's auditorium. Community donors, 135 in total, gave \$323,254 in award money, which combined with college awards yielded over \$1.2 million for Port Angeles students. Donors review student scholarship notebooks and make the scholarship recommendations and choices. The Peninsula Daily News will publish an insert in June listing all scholarships and recipients.

Congratulations to all students who received scholarship awards! A round of applause to community groups and individuals for their contributions on behalf of our students!

Kindergarten Registration Continues

Kindergarten registration is open for children in the Port Angeles School District. Students should be registered at the nearest elementary school at the earliest possible date. Children must be 5 years old before September 1, 2008 to be eligible for kindergarten enrollment for the 2008-09 school year.

- Dry Creek Elementary School 360.457.5050
- Franklin Elementary School 360.457.9111
- Hamilton Elementary School 360.452.6818
- Jefferson Elementary School 360.457.4231
- Roosevelt Elementary School 360.452.8973

For additional information, call 360.457.8575.

UPCOMING EVENTS

June 5

PAHS Concert:
Jazz Ensemble
Percussion Ensemble
7:30 p.m.
School Performing Arts Center

June 9

Regular School Board Meeting
7:00 p.m.
Central Services Building

June 13

PAHS Graduation
8:00 p.m.
PAHS Main Gymnasium

June 16

Lincoln High School Graduation
3:00 p.m.
North Olympic Peninsula Skills Center

June 16

Last Day of School

June 23

Regular School Board Meeting
7:00 p.m.
Central Services Building

September 2

2008-09 School Year Begins

LISTEN IN

Newsradio 1450 KONP broadcasts live interviews with Port Angeles District staff and students on the third Tuesdays of the month during the school year at 1:05 p.m. On June 10, host Todd Ortloff will review the 2007-08 school year and the future of our schools with district staff. Listen Live, or download the podcast from: www.konp.com.

ELIST

Sign up to receive school district news and updates via an ELIST email newsletter. Visit the district's website: www.portangelesschools.org; look for "Mailing List" sign up instructions on the home page.

School Websites

Dry Creek:

www.portangelesschools.org/drycreek

Franklin:

www.portangelesschools.org/franklin

Hamilton:

www.portangelesschools.org/hamilton

Jefferson:

www.portangelesschools.org/jefferson

Roosevelt:

www.portangelesschools.org/roosevelt

Stevens Middle School:

www.pasd.wednet.edu/school/sms/index.htm

Port Angeles High School:

www.pasd.wednet.edu/school/hs/index.htm

Skills Center Open Enrollment

Enrollment in summer programs at the North Olympic Peninsula Skills Center, 905 West 9th Street, is now open. Classes will be offered in applied math, cosmetology, culinary arts, custom painting, DigiPen-3D Animation, DigiPen-Programming and digital media technology. To register, students must be entering ninth through twelfth grades in the fall and be 14 through 21 years old. Call the Skills Center at 360.565.1533, or visit www.nopsc.org, for more info and to check class availability.

Family and Student Access

The Port Angeles School District opened Skyward's Family and Student Access to Port Angeles High School, Lincoln High School and Stevens Middle School students and families earlier this school year. With the family access web portal, you can easily review your student's attendance, academic progress, and lunch account balance from any Internet access location. Visit your school's website or log on to Family and Student Access at www.portangelesschools.org. The district is hoping to expand this program to the elementary grades in the near future.

COLLEGE BOUND SCHOLARSHIPS FOR 7TH AND 8TH GRADE STUDENTS!

A new state program can help 7th and 8th grade students plan for college. "The College Bound Scholarship is a financial aid program for students who are eligible to participate in the free and reduced-price lunch program," said Ann Daley, Executive Director of the Higher Education Coordinating Board. "It is designed to inspire students to begin making their college and career plans without worrying about the cost of attending college." To see if your student is eligible and to apply online, go to: www.hecb.wa.gov/collegebound. Eighth graders: Apply NOW! Call Stevens Middle School counselors for assistance at 360.452.5590.

SCHOLARSHIPS "PROMISED" TO TWO 8TH GRADERS

Two Port Angeles students were awarded the 2008 Gladys Christopher Pollanz Promise Scholarships. (This is a different scholarship from the College Bound program!) Stevens Middle School eighth graders, Kiana Andrus and Katie Wallace, received the promise of a \$24,000 college scholarship each, \$6,000 per year for four years, providing that they meet scholarship criteria and graduate from Port Angeles or Lincoln High School.

Finalists from Stevens for the 2008 Promise Scholarship were Ezra Blayrock, Mia Piper, Savannah Abbott and Kacee Garner.

The Promise Scholarship was started by the family of Gladys Christopher Pollanz in 2005, and is awarded yearly with the help of the Port Angeles Education Foundation and the staff of Stevens Middle School and previously, Roosevelt Middle School. The goal of this program is to help students focus early on being successful high school students, while knowing in advance that they have an opportunity to attend college. For more information about the Promise Scholarship, call Central Services staff at 360.457.8575.

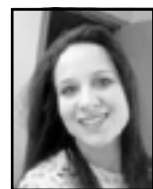


Promise Scholar finalists from Stevens Middle School, left to right, Ezra Blayrock, Kiana Andrus (recipient), Mia Piper, Savannah Abbott, Kacee Garner and Katie Wallace (recipient).

MATH OLYMPIAD COMPETITION AT MIDDLE SCHOOL

Almost 200 students from grades four through eight gathered at Stevens Middle School in early May for the Math Olympiad. Organizer Vicki Helwick, who teaches math at Lincoln High School, reported that 46 teams participated in the event, with nine teams coming from Marvista Elementary in Seattle, and the remaining teams from Port Angeles and Sequim. Teams from Greywolf Elementary, Helen Haller and Sequim Middle School represented the Sequim School District, and teams from Franklin Elementary, Jefferson Elementary and Stevens Middle School competed on behalf of the Port Angeles School District.

Five "medals of honor" were awarded, three to Marvista Elementary teams, and two to Port Angeles teams, one from Franklin Elementary and one from Stevens Middle School. Members of the "medal of honor" team from Stevens Middle School were Carly La, Kelley Mayer, Danielle Schimschal and Josh Basden. Team "medal of honor" winners from Franklin were Kendal Jacobson, Audra Perrizo, Rozalyn Piper and Hannah Stewart. Congratulations to all of our student math competitors!



JEANA HUTTON, CLASS OF 1997

"Growing up in Port Angeles and attending school here gave me the opportunity to grow in a safe, small town with several large city advantages," said 1997 Port Angeles High School graduate Jeana Hutton. She took health occupations classes at PAHS while gaining 11 credits through the Peninsula College tech prep program, yet never had to leave high school to take college classes.

"I started in Donna Moreau's health occupations class without having any idea what I would eventually do with it," Hutton explained. "I loved learning about the body and disease process. I thrived in the hands-on patient interaction. Donna helped me find a niche where I felt smart and competent. She looked past teenage angst and attitude and encouraged my independence and leadership abilities."

"I participated in the high school's Multi-Cultural Club which helped me learn to be sensitive and accepting of all cultures and belief systems," Hutton added.

After passing the Washington State Nursing Assisting board test, Hutton worked as a nursing assistant in nursing homes, home care and hospitals. She later worked at Olympic Medical Center as a nursing assistant while enrolled in the nursing program at Peninsula College.

Hutton, who gained her Associate in Applied Sciences in Nursing from Peninsula College and is a Certified Critical Registered Nurse, has two daughters and continues to work at Olympic Medical Center. "Now I help with the high school classes as a judge for student skills competitions!"

SCHOOL MATTERS

Published by:

Port Angeles School District
216 East Fourth Street
Port Angeles, WA 98362-3023
360.457.8575

Website:

www.portangeleschools.org

Dr. Gary Cohn, Superintendent
Michelle Reid, Assistant Superintendent
Mary Hebert, Assistant Superintendent

