

# SCHOOL MATTERS

FALL 2007

PORT ANGELES SCHOOL DISTRICT SCHOOL NEWS & EVENTS

## SCHOOL DISTRICT UPDATES

Thanks to the support of our community and the very hard work of staff and teachers this summer, school reopened on September 4 with relative ease. A lot of thought and planning by many people went in to our schools' transition process and it was gratifying to finally see the results of so much work and energy. Thank you to our families and students for their hard work and incredible patience as we continue to make our schools great places for our children! We are excited about the upcoming school year and will continue to update families seasonally via School Matters. To help us evaluate School Matters, please email us at [info@pasd.wednet.edu](mailto:info@pasd.wednet.edu) and let us know whether you have read this fall's newsletter. Suggestions welcomed! Thank you for your support of our schools!

### Simple Majority Vote on November Ballot

- **How does Washington's current school levy system work?** Currently, local school levies must receive both a 60% supermajority approval and meet the 40% validation requirement to pass.
- **What would EHJR 4204 do?** EHJR 4204 would amend the Washington State Constitution and would provide that a simple majority of voters (50% + 1) could authorize local school district levies. The amendment also removes the 40% election validation requirement for levy elections. It does NOT apply to school bond elections. EHJR 4204 will be on the November 6th ballot.
- **What do school levies pay for?** Local levies support school needs. In our district, the maintenance and operations levy helps to support education programs and school operations such as teaching, school supplies, athletics and activities, maintenance, transportation and student safety. Our local levy pays for 18 percent of the district's operating budget.
- **What happens if school levies don't pass?** Some school levies have failed because they do not meet the supermajority requirement. Levy failures can result in budget cuts, which require program cuts, staff and/or teacher layoffs, and other disruptions. Elections cost money. If school districts need to run a subsequent election for the same levy, it will take money away from educational programs. It cost our district \$42,000 to run the most recent February 6, 2007 levy election.
- **Do all types of levies require a supermajority to**



Taylor Price, freshman at PAHS, records school district announcement on KONP Radio 1450.

**pass?** No, they do not. Regular tax levies do not require supermajority approval. Public hospital districts, metropolitan park districts, and other taxing jurisdictions can pass levies to operate hospitals, parks, and other facilities with a simple majority vote. School districts are held to the supermajority standard to pass a local levy.

Information approved and provided with permission from Washington State PTA.

### More Thank You's

Did you hear the recent Radio KONP 1450 announcements about our schools? Thank you to KONP's Amanda Bacon for coordinating the effort! And, thank you to students Josh Basden, Madison Bauman, Luke Price, Luis Peña, Ian Price and Taylor Price! Here's one example:

*My name is Josh and I'm a student at Stevens Middle School. Port Angeles public schools reopen on September 4. Stevens Middle School bus routes have been affected dramatically by district changes and by construction for the 8th Street bridges. We've added temporary busing and "express routes" to make life easier. Parents can drop you off at an express route, and the bus will take you straight to Stevens. Saves time, saves gas, saves money. For more information, log on to [www.portangelesschools.org](http://www.portangelesschools.org). Thank you to our community for its support of our schools!*

## UPCOMING EVENTS

### October 12

*Learning Improvement Day*  
Work day for teachers  
No school for students

### October 16

*KONP PASD Discussion*  
1:05 p.m.  
"Live" with Todd Ortloff  
Radio 1450

### October 22

*Regular School Board Meeting*  
7:00 p.m.  
Roosevelt Elementary School

### October 23

*PAHS Concert*  
Performing Arts Center  
7:30 p.m.  
Free  
Open to the public

### November 8 & 9

*Teacher Conferences*  
Grades K-12

### November 12

*Veterans Holiday*

### November 22 & 23

*Thanksgiving Holiday*

### December 19-31

*Winter Break*

### ELIST

You can sign up to receive school district news and updates via ELIST email newsletter by visiting the website [www.portangelesschools.org](http://www.portangelesschools.org). Look for "Mailing List" sign up instructions on the home page.

### COMING SOON

Look for updates to the elementary school websites!

### STUDENT TRANSPORTATION

Port Angeles School District bus routes continue to be updated as we begin the 2007-07 school year. Updates are posted continually to the district's website: [www.portangelesschools.org](http://www.portangelesschools.org).

### LISTEN IN

Newsradio 1450 KONP broadcasts live interviews with Port Angeles District staff and students on the third Tuesdays of the month during the school year at 1:05 p.m. On October 16, host Todd Orloff will interview PAHS ASB officers on their plans for the 2007-08 school year. Listen Live, or download the podcast from the KONP website: [www.konp.com](http://www.konp.com).

### You're Invited!

Port Angeles High School's Music Department has released its 2007-08 Concert Schedule. All concerts are free and open to the general public. They are held in the high schools' Performing Arts Center and start at 7:30 p.m.

Programs for 2007 are:

#### Tuesday, October 23:

Concert Band, Symphonic Choir, Concert Orchestra, Symphonic Orchestra, Vocal Unlimited and Jazz Ensemble

#### Tuesday, November 6:

Chamber Orchestra, Wind Ensemble, Symphonic Band, Women's Choir and Men's Choir

#### Thursday, December 6:

All Choirs, Bands & Orchestras

### Inclement Weather Notification

On days of inclement weather, there is the possibility of starting school two hours late, and in the event of a rapidly declining weather situation, ending school early rather than just closing school. School closure information is broadcast throughout the day on Radio KONP-1450 AM, and on most Seattle area TV stations (Channels 4, 5, 7 and 13). This information is also available via the Internet at [www.portangelesschools.org](http://www.portangelesschools.org). Depending on weather conditions, decisions to close school or start late are usually made by 5:00 a.m., and generally out to the news media by 5:30 a.m.

It is important for each family to have an alternate plan in the event that the normal school day is adjusted for safety. At the elementary level, students will not be released from school until direct contact has been made with an adult authorized on the student's enrollment form.

In a late start situation, there will be no morning kindergarten or any pre-school programs. If the weather becomes worse, there is the possibility that a late start could be changed to a school closure, or that an early release would be determined necessary.

### Sodexo School Services

Sodexo serves as an independent food contractor for the Port Angeles School District. Visit the district's website at [www.portangelesschools.org/students/food-services-sodexo.html](http://www.portangelesschools.org/students/food-services-sodexo.html) for menus, make online payments, access current job opportunities, and find other important food service information.

### Free and Reduced Price Meals

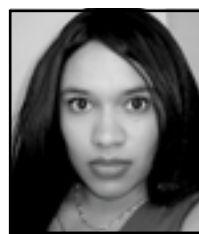
Children from households that meet federal guidelines are eligible for free or reduced price meals under the National School Lunch and School Breakfast programs. This includes those households which receive Basic Food or Temporary Assistance for Needy Families (TANF), take part in the Food Distribution Program on Indian Reservations (FDPIR), or have foster children. You can download an application from the website at [www.portangelesschools.org/students/food-services-sodexo.html](http://www.portangelesschools.org/students/food-services-sodexo.html), or call 360.457.8575 for more program information.

### Clallam County Offers Immunization Clinics

The Clallam County Health Department is providing on-site immunization clinics at Port Angeles High School during the 2007-08 school year. The first clinic will be on Friday, November 16, 8:30 a.m.-3:30 p.m. in the nurse's office. Immunization information, fees and consent forms will be posted to the high school and district websites soon. The flu vaccine will be available at November clinic.



Luke Price, freshman at PAHS, records school district announcement on KONP Radio 1450.



## CATHARINE MALMSTEN, CLASS OF 1995

"I think that growing up in Port Angeles has helped me understand and empathize with some of my patients who come from smaller towns, and how that might affect the health care that they have received," says Catharine Malmsten, graduate from Port Angeles High School in 1995. Malmsten recently finished a residency in Internal Medicine at the University of California, Davis Medical Center, and has just moved to Milwaukee, Wisconsin to start a three-year fellowship in cardiology at Medical College of Wisconsin.

Malmsten considers some of her former Port Angeles High School teachers as mentors. "I think of Ms. Haas from Spanish class every time I try to use some Spanish to communicate with my patients who are Spanish speaking only," she says. "Mr. Johnson was very encouraging about reading and those things I wanted to learn about. He encouraged a variety of discussions." She remembers Mr. McLaughlin as a tough but fair grader; "I remember him saying once that if he ever needed his heart worked on, he would be fine with me working on it. At the time, I knew I was going to be a doctor, but I had not figured out that I was going to be a cardiologist!"

Malmsten received her Bachelor of Arts in anthropology from the University of California, Berkeley and her M.D. from the University of California, San Francisco, completing cardiology research at San Francisco General Hospital in 2004.

SCHOOL *M*ATTERS

### Published by:

Port Angeles School District  
216 East Fourth Street  
Port Angeles, WA 98362-3023  
360.457.8575

### Website:

[www.portangelesschools.org](http://www.portangelesschools.org)

Dr. Gary Cohn, Superintendent  
Michelle Reid, Assistant Superintendent  
Mary Hebert, Assistant Superintendent



[www.portangelesschools.org](http://www.portangelesschools.org)