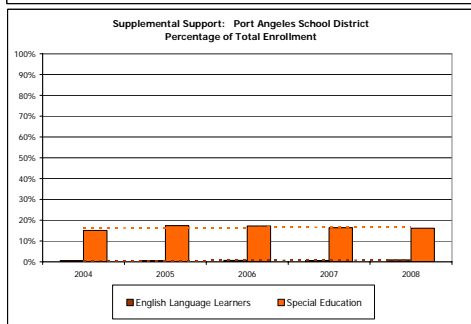
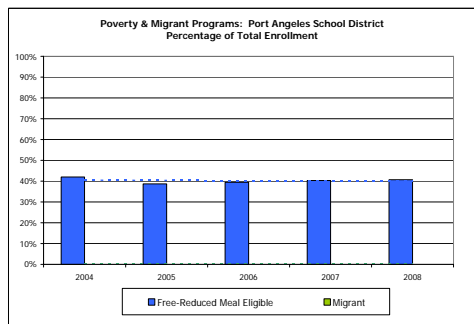
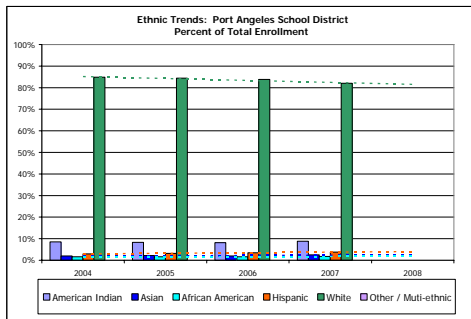
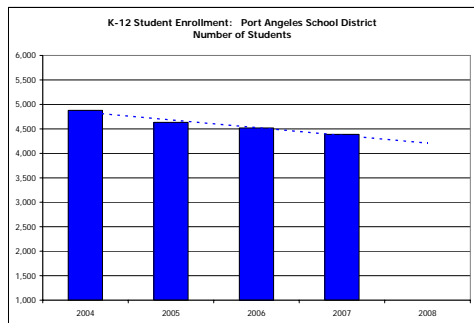


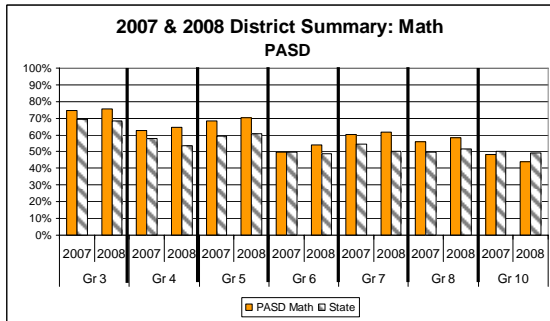
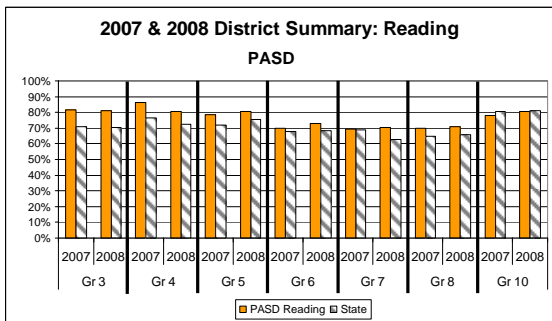
Note: All data is from the OSPI website
 • Enrollment and ethnicity from October of year stated
 • Program, graduation and drop-out data from May/June of year stated
 • 2008 graduation, drop-out, enrollment and ethnicity data is missing

Demographic-Achievement-Contextual Data

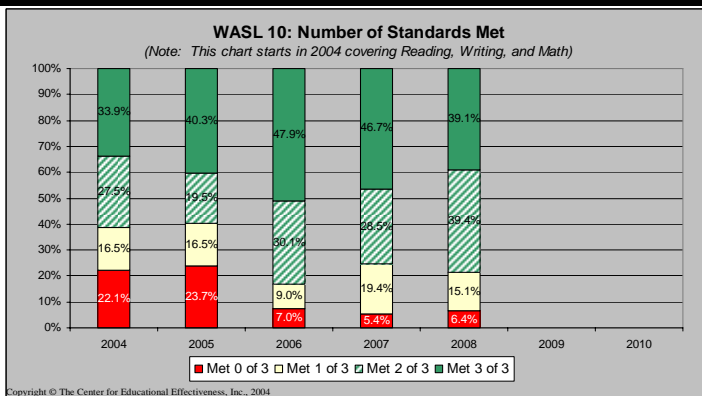
Demographic



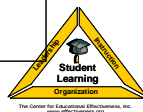
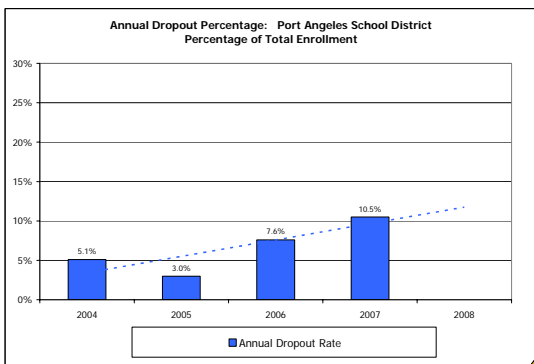
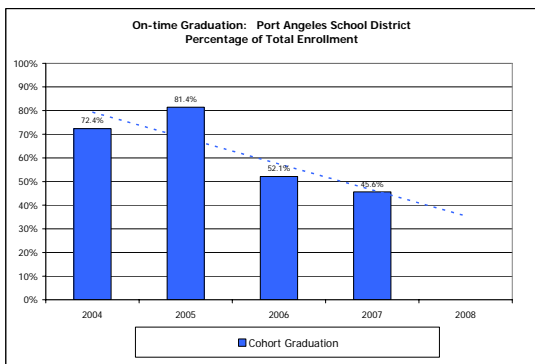
Achievement



Achievement



Contextual



Reading-Math Learning Index (RMLI)

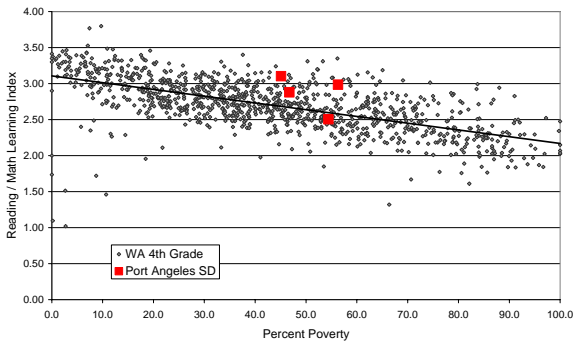
This view presents a combined view of Reading and Math performance relative to poverty—compared to schools at your level from throughout the state.

Poverty: Percentage of students eligible for free/reduced meal programs

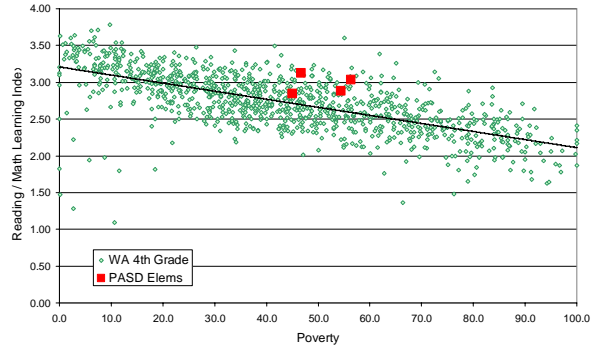
Combined Reading / Math Learning Index: The individual school Reading and Math Index is a weighted average of the WASL Performance Levels (Levels 1-4). The actual formula is: Reading Level Index (RLI) = 1 x %Level-1, 2 x %Level-2, 3 x %Level-3, 4 x %Level-4. Average the Reading and Math Level Indexes: Combined Index = (RLI + MLI) / 2. For example, if 100% of your students were at Level-4 in both Reading and Math, your Combined Level Index would be 4.0. Or, if in Reading you had 15% at Level-1, 20% at Level-2, 40% at Level-3, and 25% at Level-4 (65% meeting standard) – your Reading Level Index = 2.75.

Elementary: Grade 4

WA State Grade 4: RMLI '02-'03 Baseline



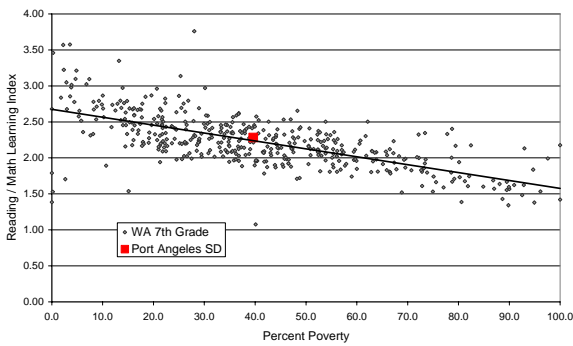
WA State Grade 4: RMLI 2008



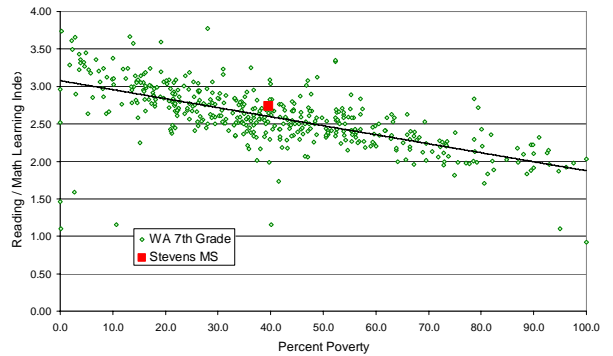
School	% Poverty-2008
Dry Creek Elementary	54.4
Franklin Elementary	45.1
Hamilton Elementary	46.7
Jefferson Elementary	56.3

Middle School: Grade 7

WA State Grade 7: RMLI '02-'03 Baseline

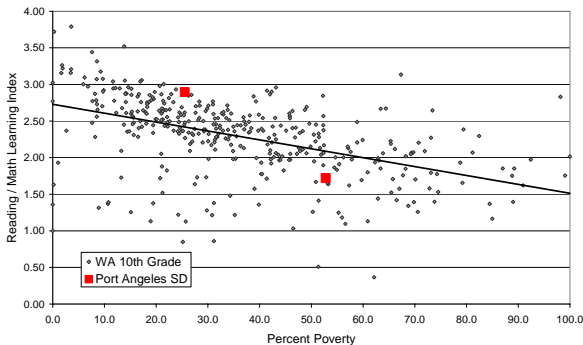


WA State Grade 7: RMLI 2008

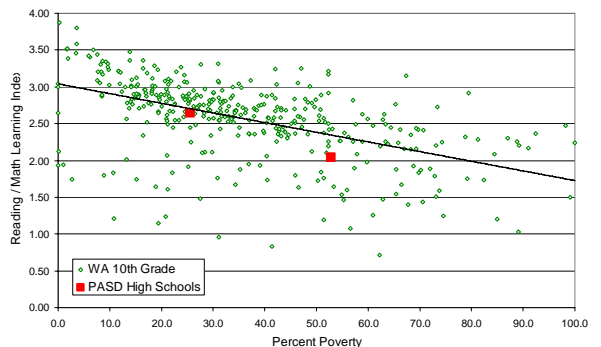


School	% Poverty-2008
Stevens Middle School	39.6

WA State Grade 10: RMLI '02-'03 Baseline

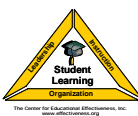


WA State Grade 10: RMLI 2008



School	% Poverty-2008
Lincoln High School	52.8
Port Angeles High School	25.5

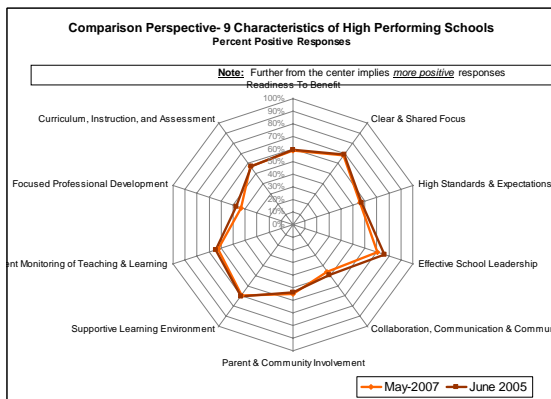
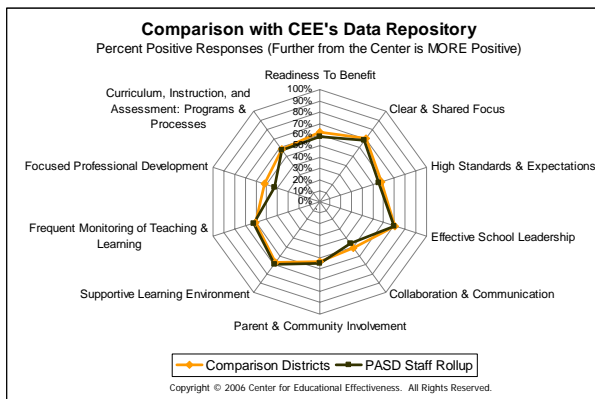
High School: Grade 10



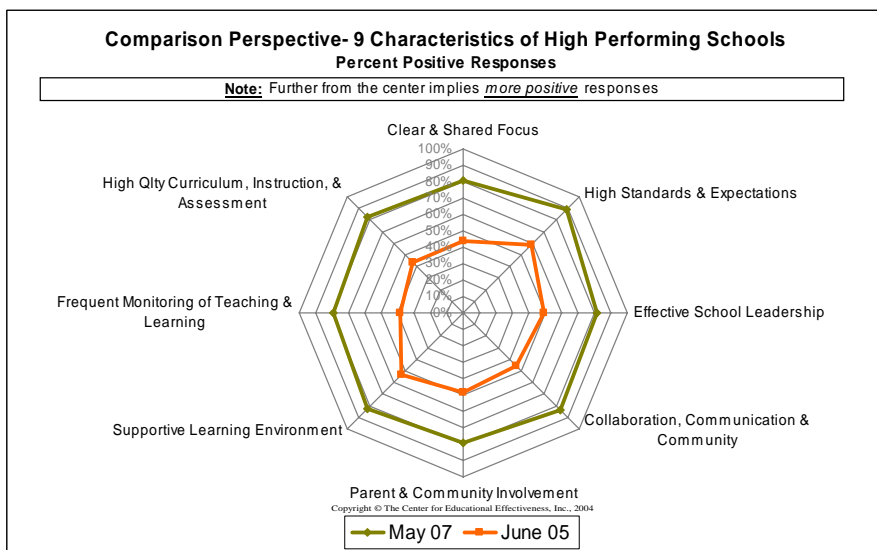
Perceptual Data

Educational Effectiveness Survey Data (Nine Characteristics of High Performing Schools)

Staff Perceptions 2007 v 2005



Parent Perceptions 2007 v 2005



Student Perceptions 2007 v 2005

